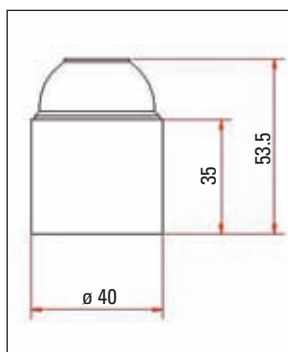




# Minuterie e accessori per lampade Fixtures and accessories for lamps

## Portalampada in bakelite E27 liscio

### Lampholder in smooth Bakelite E27



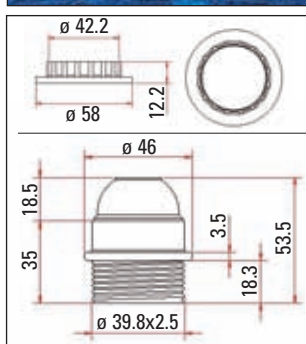
**CARATTERISTICHE GENERALI**  
CORRENTE NOMINALE: E14=2A / E27 = 4A  
TENSIONE NOMINALE: 250 V.  
TEMPERATURA NOMINALE: T 190°C.  
MORSETTI A 2 INGRESSI PER CAVI RIGIDI O FLESSIBILI DA 0,5 A 1 MM<sup>2</sup>.  
DISPOSITIVO DI BLOCCO ANTISVITAMENTO.

**GENERAL FEATURES:**  
NOMINAL CURRENT: E14=2A / E27 = 4A  
NOMINAL VOLTAGE: 250V.  
NOMINAL TEMPERATURE: T 190°C.  
TERMINALS WITH 2 ENTRIES FOR HARD OR FLEXIBLE WIRES FROM 0.5 TO 1mm<sup>2</sup>.  
ANTI-SCREWING BLOCKING DEVICE.

CODICE CODE	ARTICOLO ARTICLE	COLORE COLOUR	COD.EAN EAN CODE	
BL/EM760/SB/VB	2 Portalampada E27 liscio 2 Lampholder E27 smooth	V.Bianco White	8019695002642	10
BL/EM760/SB/N	2 Portalampada E27 liscio 2 Lampholder E27 smooth	Nero Black	8019695002659	10
BL/EM760/SB/VO	2 Portalampada E27 liscio 2 Lampholder E27 smooth	V.Oro Gold	8019695007616	10

## Portalampada in bakelite E27 semifilettato con ghiera

### Lampholder in bakelite E27 semi-threaded with ring nut



**CARATTERISTICHE GENERALI**  
CORRENTE NOMINALE: E14=2A / E27 = 4A  
TENSIONE NOMINALE: 250 V.  
TEMPERATURA NOMINALE: T 190°C.  
MORSETTI A 2 INGRESSI PER CAVI RIGIDI O FLESSIBILI DA 0,5 A 1 MM<sup>2</sup>.  
DISPOSITIVO DI BLOCCO ANTISVITAMENTO.

**GENERAL FEATURES:**  
NOMINAL CURRENT: E14=2A / E27 = 4A  
NOMINAL VOLTAGE: 250V.  
NOMINAL TEMPERATURE: T 190°C.  
TERMINALS WITH 2 ENTRIES FOR HARD OR FLEXIBLE WIRES FROM 0.5 TO 1mm<sup>2</sup>.  
ANTI-SCREWING BLOCKING DEVICE.

CODICE CODE	ARTICOLO ARTICLE	COLORE COLOUR	COD.EAN EAN CODE	
BL/EM761RSSBVB	2 Portalampada E27 semifilettato 2 Lampholder E27 semi-threaded	V.Bianco White	8019695003908	10
BL/EM761/RSSBN	2 Portalampada E27 semifilettato 2 Lampholder E27 semi-threaded	Nero Black	8019695003892	10
BL/EM761RSSBVO	2 Portalampada E27 semifilettato 2 Lampholder E27 semi-threaded	V.Oro Gold	8019695007630	10