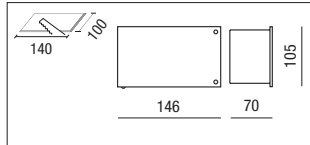


LED Lodi



Incasso a parete per interni e per esterni a base rettangolare, ideale per ambiti residenziali e pubblici e per qualsiasi percorso pedonale o rampe d'accesso a garage.
LED Lodi è disponibile con due frontalini che permettono di ottenere due differenti distribuzioni luminose in base alle proprie necessità ed un differente aspetto estetico.

Installazione: ad incasso. Cassaforma inclusa.

Corpo: in estruso di alluminio anodizzato.

Diffusore: policarbonato satinato.

Sorgente: LED 5630

Indoor and outdoor wall-recessed light with rectangular base, ideal for residential and public areas and for any kind of pedestrian pathway or access ramps for garages.

The LED Lodi light is available with two front panels that allow two different light distribution to be obtained in order to suit your needs, with a unique look.

Installation: recessed. Installation tube included.

Housing: in anodised extruded aluminium.

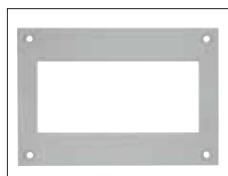
Diffuser: satined polycarbonate.

Source: LED 5630

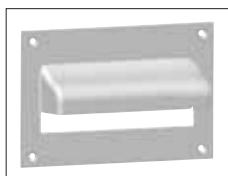
Accessori non inclusi - Not included accessories

Ghiera frontale con verniciaturadi tipo poliestere eseguita a polvere, resistente agli agenti atmosferici. **Colore Grigio RAL 9007.**

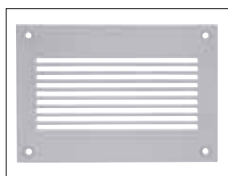
Front ring nut coated with powdered polyester, resistant to atmospheric agents. Grey colour RAL 9007.



Cod. 29107 - Euro: 16,00
Ghiera frontale
Front ring nut



Cod. 29102 - Euro: 22,00
Ghiera frontale asimmetrica
Asymmetrical front

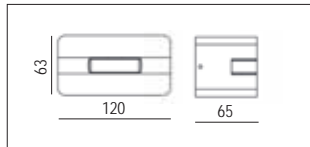


Cod. 29105 - Euro: 18,00
Ghiera frontale 1000 righe
Front ribbed ring nut



W	mA	Optic	K	lm	pcs	Kg	CELL	Euro
4	350	120°	4000	500	1	0,30	29112	43,00
4	350	120°	3000	500	1	0,30	29099	43,00

LED Line Up



Illuminazione che disegna l'architettura con fasci di luce mettendo in evidenza vuoti e pieni che ne enfatizzano la tridimensionalità degli spazi.

La luce interagendo con la materia crea ambienti nuovi che di giorno non esistono

Il corpo illuminante tende a scomparire per le sue ridotte dimensioni

Installazione: in appoggio

Corpo e telaio: schermo in polimetacrilato, corpo in alluminio pressofuso

Driver: incluso

Light designs architecture with beams of light highlighting empty and full that emphasize the three-dimensionality of spaces.

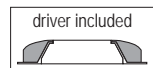
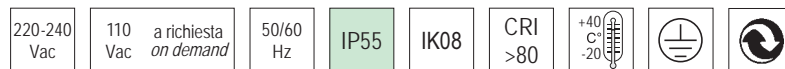
Light interacting with matter creates new rooms that do not exist during the day

The lighting body tends to disappear thanks to its small sizes

Installation: Wall and ceiling mounted

Body and frame: polymerised acrylic screen, die-cast aluminum body

Driver: driver included



colour	W	Optic	K	lm output	pcs	Kg	CELL	Euro
N	6	180°	4000	118	1	0,30	29140	125,00
N	6	180°	3000	118	1	0,30	29141	125,00

